

Roadway Markers

Perm. Survey Tie (w/rebar in the top) .07 tons each

IDOT CODE: 667101
Our Code: 2135

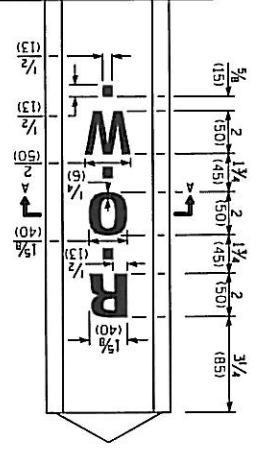
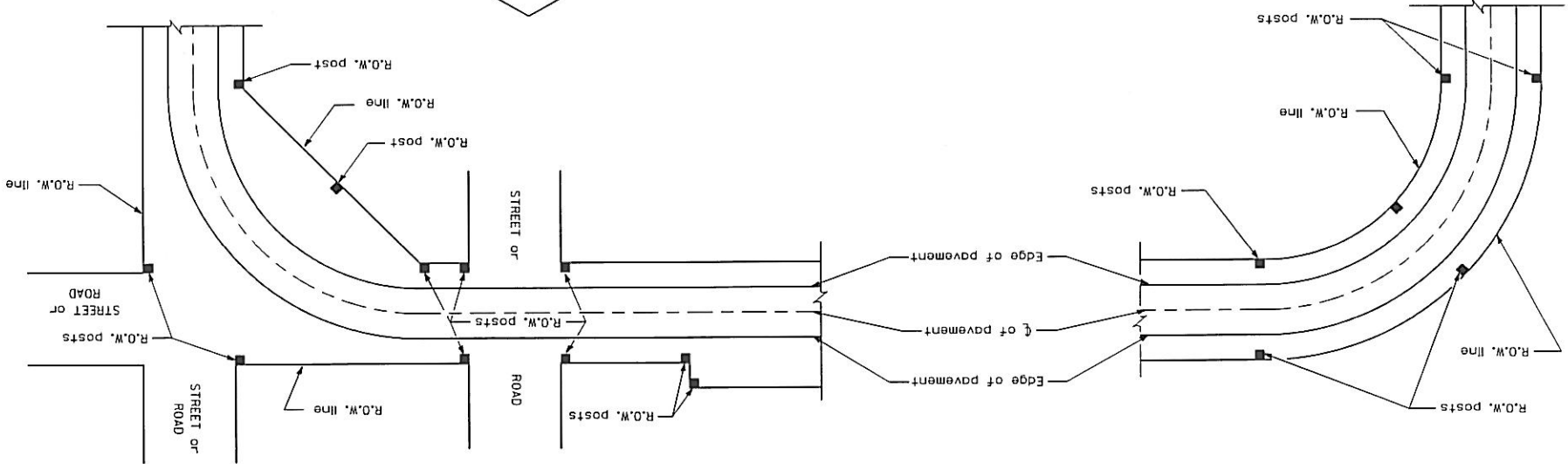
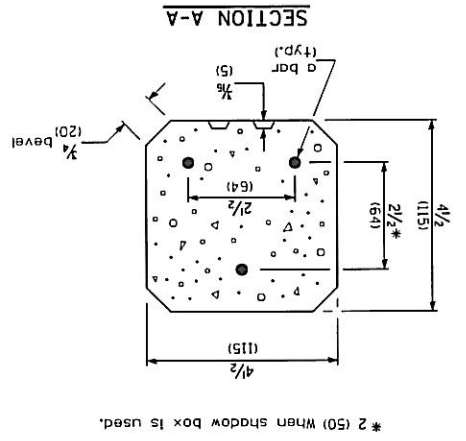
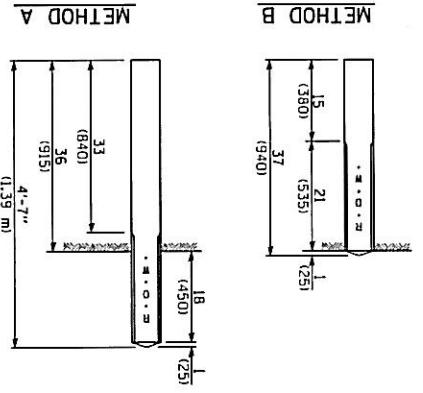
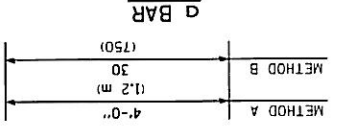
Perm. Survey Marker, Type 1
(metal disc w/ magnet) (Alum)
(Bronze)

Perm Survey marker, Type 2 .23 tons (Alum
(Bronze or Alum. Concrete column or
w/ disc & magnet mounted) Bronze)

Right of Way Markers 140 lbs each

Drainage Markers 140 lbs each

INCHES Department of Transportation
 PASSED January 1, 2009
 ENGINEER OF PROJECT AND PROCEDURES
 APPROVED January 1, 2009
 ENGINEER OF DESIGN AND ENVIRONMENT



Reinforcement bars shall be No. 3 (No. 10) unless otherwise specified.
 A 2 1/2" x 1 1/2" (70 x 310) shadow box with beveled edges, and a 5/16" (5) thick indentation may be used with the standard lettering shown.

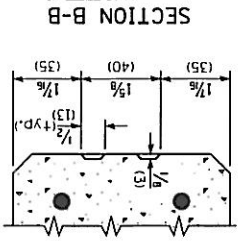
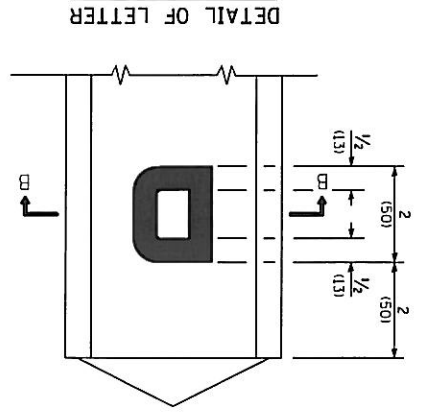
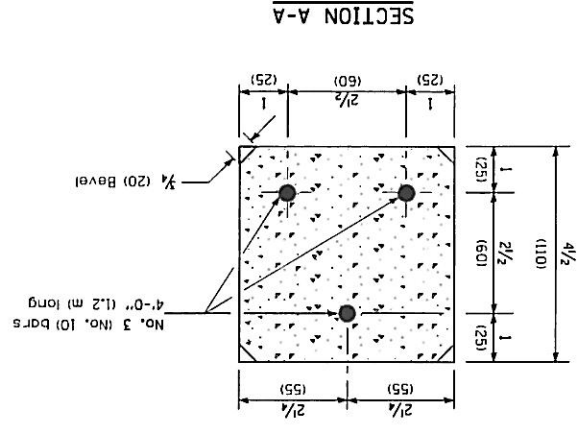
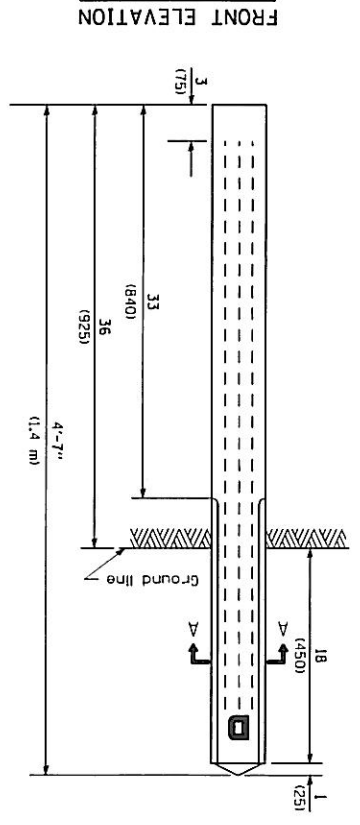
GENERAL NOTE

RIGHT OF WAY MARKERS

STANDARD 666001-01

DATE	REVISIONS
1-1-09	Switched units to English (metric).
1-1-97	Renum. Standard 1744-6.

(KS) Illinois Department of Transportation
 PASSED JANUARY 1, 2009
 APPROVED PROJECT AND PROCEDURES
 ENGINEER OF DESIGN AND ENVIRONMENT
 ISSUED 1-1-97



DATE	REVISIONS
1-1-09	Switched units to English (metric).
1-1-97	Renum. Standard 1999-4.

All dimensions are in inches (millimeters) unless otherwise shown.

STANDARD 667001-01
DRAINAGE MARKERS